


domkapa
create comfort

A photograph of a courtyard with high brick walls. Sunlight streams in from a high opening, creating a bright patch on the floor and illuminating two modern, dark-colored armchairs. The walls are partially covered in ivy, and a small bird is perched on a ledge. The text "DESIGN MEETS COMFORT" is centered in the middle of the image.

DESIGN MEETS COMFORT



Established in 2009, Domkapa is an upholstery specialized brand based in Portugal that values the combination of four elements: manual sewing techniques, timeless design solutions, high-quality materials and unmatched comfort.

Domkapa's pieces are re-interpretations of classics, designed to stand the test of time and fusing heritage elements with modern influences.

The brand challenges its team to achieve the perfect daily meeting between design and comfort in each piece, for both commercial and residential projects.

ARMCHAIRS



10 ELBA



11 ANGELIE



12 LEGACY



14 PEARL



16 HARMONY



18 MEGAN



20 EVA



21 ALBA



22 GRETA



24 GIOVANNA



25 KELLY



26 STRANGER

DINING ARMCHAIRS & CHAIRS



31 CAMILLE



32 KATY



33 BINOCHÉ



33 BINOCHÉ



37 VIANNA



37 VIANNA



38 STRANGER



39 NOUVEAU



41 ESSENTIAL



42 RUAH



42 RUAH



43 GRAM



46 EVA



46 EVA



47 INGRID

BAR & COUNTER CHAIRS



50 STRANGER



50 STRANGER



51 GRAM



51 GRAM



52 KATY



52 KATY



54 CAMILLE



54 CAMILLE



55 EVA



55 EVA



56 LOREN



56 LOREN

SOFAS



61 STELLA



62 NOOK



63 SHINTO



67 DISRUPTION



69 TAIS



70 NICOLE



71 ANISTON

POUFS



76 CAPSULE



77 LOW



78 ANGLES



81 KATE



82 RACHEL



85 RUBI



86 LEIA



87 ZIGZAG



91 LIZ

BEDS



94 SLAB



96 BARDOT



98 ECHO



102 MONROE



104 YUMI



106 AMANDA

CASEGOODS



111 SUNSET



113 LAVINIA



114 ELBA



116 CLEO



119 SIENNA



139 GRAZI



140 TAYLOR



141 TAYLOR



141 TAYLOR

SIDE & COFFEE TABLES



120 INSIDE



120 INSIDE



121 INSIDE



124 REESE



125 MANO



125 MANO



129 SHARON



130 GINA



131 GINA



134 PANTON



135 PANTON

ARMCHAIRS





[Back to
Index](#)

ELBA ARMCHAIR & OTTOMAN

Elba Armchair creates elegant environments with bold lines. This curved armchair is a luxury statement piece for strong living rooms. Created to fulfill the needs of those seeking unique designs combined with high-quality materials and luxurious details.

Pictured Fabrics: Cotton Velvet Paris Brick;
Pictured Materials: Gold Polished Stainless Steel Base;
Armchair Measurements: L880 x W800 x H1040 x SH430 mm;
Ottoman Measurements: L700 x W700 x H440 mm.

[Request 3D or DWG files.](#)



[Back to
Index](#)

ANGELIE ARMCHAIR

Angelie Armchair gets its inspiration on the old Cubanese's seating statements – vibrant rhythms transmitted through the use of colors and woods. Bring the Cuban design style and bright hue vibes into contemporary living rooms with an eclectic soul.

Pictured Fabrics: Cotton Velvet Siége 0166 Curry;
Pictured Materials: Legs in Beech Stained in Fumé
Eucalyptus Finish;
Measurements: L700 x W920 x H1130 mm;.

[Request 3D or DWG files.](#)



[Back to
Index](#)

LEGACY ARMCHAIR

Pleasing to the eye and fully functional, Legacy Armchair features high-quality materials and meticulous attention to detail. Characterized by curved lines and minimalist design, this is the seating piece to enjoy simple moments. Perfect in pairs or solo.

Pictured Fabrics: Cotton Velvet Paris Forest;
Measurements: L700 x W790 x H750 mm.

[Request 3D or DWG files.](#)







[Back to
Index](#)

PEARL ARMCHAIR

Pearl Armchair holds an idyllic language. A peculiar piece inspired on the Athenese architecture that elegantly complements an interiors project. This elegant armchair is designed in a classic form, where each detail tells a different story, full of surprises.

Pictured Fabrics: Cotton Velvet Project 21 Steel Gray;
Pictured Materials: Gold Stainless Steel Structure;
Measurements: L880 x W820 x H780 mm.

[Request 3D or DWG files.](#)



[Back to
Index](#)

HARMONY ARMCHAIR & OTTOMAN

Fully upholstered in velvet, Harmony Armchair is an unforgettable piece with a soft and fluid silhouette. Harmony Armchair features an exaggerated, curved form. A mandatory seating piece for residential and hospitality projects.

Pictured Fabrics: Royal Suede Caramello;
Armchair Measurements: L795 x W810 x H715 mm;
Ottoman Measurements: L600 x W550 x H370 mm.

[Request 3D or DWG files.](#)





[Back to
Index](#)

MEGAN ARMCHAIR

Megan Armchair is a classic's elegant design reinterpretation.

This piece can be presented in bold combinations of colors, tones, and patterns. A seating choice that radiates a sense of luxury and glamour.

Pictured Fabrics: Cotton Velvet Paris Forest;

Pictured Materials: Legs in Beech Stained in Fumé Eucalyptus Finish;

Measurements: L680 x W750 x H720 mm.

[Request 3D or DWG files.](#)





[Back to
Index](#)

EVA ARMCHAIR

Eva Armchair is an ode to the Portuguese traditional techniques of the woodwork. This design piece tells a story about style, design and heritage. A craftsmanship masterpiece for elegant and simple decors.

Pictured Fabrics: Cotton Velvet Paris Mostaza;
Pictured Materials: Natural Woven Work, Ash Stained in American Walnut Color;
Measurements: L680 x W780 x H870 mm.

[Request 3D or DWG files.](#)



[Back to
Index](#)

ALBA ARMCHAIR

Alba Armchair is highly comfortable without sacrificing design or style. This velvet seating piece holds an organic shape becoming perfect to be specified on a project. Simple yet charming, Alba Armchair creates romantic spaces.

Pictured Fabrics: Cotton Velvet Siége 0343 Ruby;
Pictured Materials: Matte Black Oak Wood;
Measurements: L650 x W630 x H890 mm.

[Request 3D or DWG files.](#)



[Back to
Index](#)

GRETA ARMCHAIR & OTTOMAN

Greta Maple is the real image of pure comfort. A wood and velvet game that combines comfort and design in just one place. This velvet piece with wood creates a comfortable living room with the touch of classic design.

Pictured Fabrics: Cotton Velvet Paris Mostaza;
Pictured Materials: Ash Stained in American Walnut Color;
Armchair Measurements: L680 x W770 x H820 mm;
Ottoman Measurements: L570 x W450 x H420 mm.

[Request 3D or DWG files.](#)





[Back to
Index](#)

GIOVANNA ARMCHAIR

Giovanna Armchair is a reinterpretation of a classic design. A stately piece that adds value to any interior design project. Great in pairs, whether in small or larger decors, from living and bedroom, to media and family rooms.

Pictured Fabrics: Cotton Velvet Paris Mud;
Pictured Materials: Legs in Beech Stained in Fumé Eucalyptus;
Measurements: L730 x W910 x H1290 mm.

[Request 3D or DWG files.](#)



[Back to
Index](#)

KELLY ARMCHAIR

Kelly Armchair is a unique piece that combines different styles and designs. A special furniture piece for luxury and exclusive environments. Sinuous lines define the Kelly armchair. Perfect for those who love strong designs and elegant details.

Pictured Fabrics: Cotton Velvet Project 06 Curry;
Pictured Materials: Gold Polished Stainless Steel Base;
Measurements: L600 x W670 x H850 mm.

[Request 3D or DWG files.](#)



[Back to
Index](#)

STRANGER ARMCHAIR

Stranger Chair is a contemporary choice for interiors design. projects committed with style. It is a contemporary choice for timeless decors with industrial inspiration. The combination of different textures and warm materials make this an unexpected design piece that perfectly balances contrasting lines.

Pictured Fabrics: Cotton Velvet Caramello and Crevin Gaudi 02;
Pictured Materials: Black Texturized Steel and Brushed
Stainless Steel, Brushed Gold Stainless Steel;
Measurements: L720 x W770 x H820 mm.

[Request 3D or DWG files.](#)





DINING ARMCHAIRS & CHAIRS





[Back to
Index](#)

CAMILLE CHAIR

Camille Chair tells a special design story: a romance between pleats and elegance, metals and singleness, woods and singularity. The perfect melody for an exclusive dining room project. Make a chic addition to any space.

Pictured Fabrics: Cotton Velvet Siége 0278 Flamingo;
Pictured Materials: High Gloss Black Lacquered Legs, Gold
Stainless Steel Feet;
Measurements: L570 x W570 x H810 mm.

[Request 3D or DWG files.](#)



[Back to
Index](#)

KATY CHAIR

Katy Chair is the modern vision of a classic. Inspired on the feminine side of the Parisian lifestyle, reinterprets a contemporary vision of a classic design. The handmade upholstery-technique named Deep Buttoning adds elegance and opulence to this piece.

Pictured Fabrics: Cotton Velvet Siége 1601 Natural Nude;
Pictured Materials: High Gloss Black Lacquered Wood
Legs, Gold Metal Polished Stainless Steel FeetCounter;
Measurements: L480 x W580 x H900 mm.

[Request 3D or DWG files.](#)



DINING ARMCHAIR



CHAIR

[Back to
Index](#)

BINOCHÉ DINING ARMCHAIR & CHAIR

Binoche Dining Armchair and Binoche Chair promises to be the perfect seating items. This mix of bold shapes provides comfort to a unique design and adds elegance to every dining room. The right amount of opulence for chic places.

Pictured Fabrics: Cotton Velvet Paris Wine;
Pictured Materials: Matte Black Oak Wood;
Armchair Measurements: L560 x W570 x H860 mm;
Chair Measurements: L560 x W570 x H860 mm.

[Request 3D or DWG files.](#)









DINING ARMCHAIR



CHAIR

[Back to
Index](#)

VIANNA DINING ARMCHAIR & CHAIR

Vianna Dining Armchair and Vianna Chair are comfort and simplicity together.. An effortless seating piece perfect for an exclusive dining room project. With clean lines, these pieces are perfect for adding drama and texture to rooms.

Pictured Fabrics: Cotton Velvet Paris Brick;
Pictured Materials: Legs in Beech Stained in Fumé
Eucalyptus Finish;
Armchair Measurements: L630 x W660 x H850 mm;
Chair Measurements: L525 x W650 x H850 mm.

[Request 3D or DWG files.](#)



Back to
Index

STRANGER DINING ARMCHAIR

Stanger Armchair is a contemporary choice interiors design projects committed with style. Simultaneously delicate and strong, this seating piece combines different materials and textures.

Pictured Fabrics: Cotton Velvet Siége 0157 Bronze Mist Green (low-back and arms) and Sahara Fossil (accent);
Pictured Materials: Black Texturized Steel, Brushed Gold Stainless Steel;
Measurements: L620 x W650 x H860 mm.

[Request 3D or DWG files.](#)



[Back to
Index](#)

NOUVEAU CHAIR

Nouveau Chair is a must-have seating piece in timeless décor that transpires functionality and comfort. Conceived for classical interiors, this upholstered chair fits perfectly a discrete environment, designing a simple set of lines in the space.

Pictured Fabrics: Cotton Velvet Paris Brick;
Pictured Materials: Black Texturized Steel;
Measurements: L520 x W270 x H855 mm.

[Request 3D or DWG files.](#)





[Back to
Index](#)

ESSENTIAL CHAIR

Introduce a chic set with Essential Chair. This accent chair silhouette features a comfortably back. Great for living or dining rooms. Materials ensure comfort and stability for any interior design project.

Pictured Fabrics: Cotton Velvet Paris Teja;
Pictured Materials: Legs in Beech Stained in Fumé
Eucalyptus Finish;
Measurements: L495 x W545 x H855 mm.

[Request 3D or DWG files.](#)



DINING ARMCHAIR



CHAIR

[Back to
Index](#)

RUAH DINING ARMCHAIR & CHAIR

Ruah Dining Armchair and Ruah Chair are a special element in the dining area's equation. These pieces add opulence to any luxury interior design project. A natural choice for contemporary sets, because everything is better in velvet.

Pictured Fabrics: Cotton Velvet Siége 1102 Pink Sand
Pictured Materials: Gold Polished Stainless Steel Base
Armchair Measurements: L560 x W570 x H810 mm;
Chair Measurements: L560 x W570 x H810 mm.

[Request 3D or DWG files.](#)



[Back to
Index](#)

GRAM CHAIR

Gram Chair is a statement seating piece. A magnetic eye-catching item perfect to complement an exclusive interior design project. Gram will make a modern addition to an interior design project full of simple lines.

Pictured Fabrics: Cotton Velvet Paris Taupe;
Pictured Materials: Black Texturized Steel;
Measurements: L435 x W540 x H860 mm.

[Request 3D or DWG files.](#)







DINING ARMCHAIR

CHAIR

[Back to
Index](#)

EVA DINING ARMCHAIR & CHAIR

Eva Dining Armchair and Eva Chair are perfect options for an authentic dining area. These seating pieces allies traditional craftsmanship techniques and unique design. A comfortable place to celebrate special moments.

Pictured Fabrics: Cotton Velvet Paris Mostaza;
Pictured Materials: Natural Woven Work, Ash Stained in American Walnut Color;
Armchair Measurements: L680 x W780 x H870 mm;
Chair Measurements: L460 x W530 x H810 mm.

[Request 3D or DWG files.](#)



Back to
Index

INGRID CHAIR

Ingrid Chair was designed having as main inspiration simple lines with a sustainable design perfect to complement any interior design project. This chair is made for relaxing, with romantic upholstery for timeless decors.

Pictured Fabrics: Royal Sude Camel;
Pictured Materials: Legs in Beech Stained in Fumé Eucalyptus
Finish and Gold Polished Stainless Steel Nails;
Measurements: L520 x W570 x H810 mm.

[Request 3D or DWG files.](#)

BAR & COUNTER CHAIRS





[Back to
Index](#)

STRANGER BAR & COUNTER CHAIR

Stranger bar chair and counter chair are contemporary choices for interiors design projects committed with style. Simultaneously delicate and strong, these seating pieces combine different materials and textures.

Pictured Fabrics: Natural Leather Montana Ocean and Cotton Velvet Paris Mud;

Pictured Materials: Black Texturized Steel and Brushed Gold Stainless Steel;

Bar Chair Measurements: L620 x W650 x H1150 mm;

Counter Chair Measurements: L620 x W650 x H1000 mm.

[Request 3D or DWG files.](#)



Back to
Index

GRAM BAR & COUNTER CHAIR

Gram bar chair and counter chair are made to be comfortable but also to stand the test of time. The structure is made of stainless steel structure and features a small back in velvet. Functional and simple, the velvet seat adds comfort and elegance.

Pictured Fabrics: Cotton Velvet Paris Taupe;
Pictured Materials: Black Texturized Steel;
Bar Chair Measurements: L440 x W450 x H1090 mm;
Counter Chair Measurements: L440 x W450 x H940 mm.

[Request 3D or DWG files.](#)



[Back to
Index](#)

KATY BAR & COUNTER CHAIR

Katy Bar Chair and Katy Counter Chair are symbols of neoclassicism's mantra. The mix of contemporary design and classic techniques such as Deep Buttoning will easily brighten an interior design bar area project. These chairs will make a statement of design to a contemporary bar or counter.

Pictured Fabrics: Cotton Velvet Siège 1601 Natural Nude;
Pictured Materials: High Gloss Black Lacquered Wood Legs,
Gold Metal Polished Stainless Steel Feet;
Bar Chair Measurements: L420 x W465 x H1025 mm;
Counter Chair Measurements: L420 x W465 x H875 mm.

[Request 3D or DWG files.](#)





[Back to
Index](#)

CAMILLE BAR & COUNTER CHAIR

Camille Bar Chair and Counter Chair owns a combination of bold materials and shapes. These pieces will elegantly compose a contemporary bar area project. Bring comfort and sophistication to dining spaces with these high-end upholstered pieces.

Pictured Fabrics: Cotton Velvet Project 08 Golden Olive;
Pictured Materials: High Gloss Black Lacquered Legs, Gold
Stainless Steel Feet;
Bar Chair Measurements: L530 x W520 x H1010 mm;
Counter Chair Measurements: L530 x W520 x H860 mm.

[Request 3D or DWG files.](#)



[Back to
Index](#)

EVA BAR & COUNTER CHAIR

There's something special about Eva Bar Chair and Counter Chair. The soft texture and the solid wood frame means these stools are made to last. The unexpected materials support modern-day life demanding: comfortable furniture pieces without sacrificing design and style.

Pictured Fabrics: Cotton Velvet Paris Mostaza;
Pictured Materials: Natural Woven Work, Matte Walnut Wood;
Bar Chair Measurements: L460 x W470 x H1110 mm;
Counter Chair Measurements: L460 x W470 x H955 mm.

[Request 3D or DWG files.](#)



Back to
Index

LOREN BAR & COUNTER CHAIR

Loren Bar Chair and Counter Chair add comfort to any bar area's project. These wood and synthetic leather stools bring a smooth look to every decor, including a dining room, bar or hotel lounge.

Pictured Fabrics: Royal Sude Camel;
Pictured Materials: Legs in Beech Stained in Fumé Eucalyptus Finish and Gold Polished Stainless Steel Nails;
Bar Chair Measurements: L510 x W480 x H970 mm;
Counter Chair Measurements: L510 x W480 x H820 mm.

[Request 3D or DWG files.](#)





SOFAS





[Back to
Index](#)

STELLA SOFA

Stella Sofa inspires itself on an imaginary city where Nature is the predominant element and where valleys and hills prevail. The curved back creates an organic shape and clean lines working as an alternative piece for the typical squared silhouette.

Pictured Fabrics: Cotton Velvet Siége 0076 Linen;
Pictured Materials: Beech Stained in Fumé Eucalyptus Base;
Measurements: L2930 x W1570 x H840 mm.

[Request 3D or DWG files.](#)



[Back to
Index](#)

NOOK SOFA

With its charming design and simple wood-legs, Nook Sofa can be integrated into any living room. It gives warmth to the interior and brings the best of the Scandinavian essence: functionality, comfort and space.

Pictured Fabrics: Cotton Velvet Paris Mud;
Pictured Materials: Natural Oak Wood;
Measurements: L2000 x W800 x H820 mm.

[Request 3D or DWG files.](#)



[Back to
Index](#)

SHINTO SOFA

The new best friend of every living room. Shinto Sofa radiates comfort, elegance and modernity. The modular sofa system has endless configurations and it can be adapted to suit your interior design project needs and tastes.

Pictured Fabrics: Royal Suede Caramello, Siège 0895 Hazel Nut;
Pictured Materials: Pictured Materials: Black Texturized Steel
Structure and Brushed Golden Detail;
Measurements: L4020 x W1620 x H820 mm.

[Request 3D or DWG files.](#)









[Back to
Index](#)

DISRUPTION SOFA

Curvy and simple, Disruption Sofa combines various elements to satisfy any desire for comfort. A timeless seating piece with seductive curves. Welcoming, Disruption Sofa creates cosy interiors.

Pictured Fabrics: Cotton Velvet Paris Salmon;
Measurements: L4000 x W2445 x H800 mm.

[Request 3D or DWG files.](#)





[Back to
Index](#)

TAÍS SOFA

Taís Sofa holds a charming identity that allows the composing of a perfect living room set. Its elegant design is inspired in some of the hallmarks of the modern aesthetic including metal details and rich velvet upholstery. Available as chaise long, three and two seat sofa.

Pictured Fabrics: Cotton Velvet Paris Cuoio;
Pictured Materials: Gold Polished Stainless Steel Legs;
Measurements: L2300 x W950 x H820 mm.

[Request 3D or DWG files.](#)



Back to
Index

NICOLE SOFA

Nicole Sofa is an essential piece for any living room project. Fine lines and curated materials' selection make this piece a perfect choice. This sofa is perfect for living rooms that need a touch of glam. Fully upholstered in inviting velvet, it has a rich texture and looks. The gold steel feet are the perfect complement.

Pictured Fabrics: Cotton Velvet Paris Safira;
Pictured Materials: Gold Polished Stainless Steel Legs;
Measurements: L2300 x W1030 x H880 mm;

Available as module, three and two seat sofa.

[Request 3D or DWG files.](#)



[Back to
Index](#)

ANISTON SOFA

Aniston Sofa is a cosmopolite design that passes the message of movement and modern flow. A velvet sofa with steel legs is always a good idea to bring a little drama to living rooms. The item's details allow it to be the perfect piece for an exclusive interiors project.

Pictured Fabrics: Crevin Gaudi 10;
Pictured Materials: Nickel Polished Stainless Steel Legs;
Measurements: L3200 x W1820 x H780 mm;

Available as chaise long, three and two seat sofa.

[Request 3D or DWG files.](#)





POUFS





[Back to
Index](#)

CAPSULE POUF

Capsule Pouf will set the tone for your interior design project direction. An oversized floor pouf that will provide a cozy and soft vibe to the decor with the special touch of being extremely versatile.

Pictured Fabrics: Cotton Velvet Paris Forest or Royal Suede Caramello pipped in Royal Suede Dark Beige;
Measurements: L600 x W420 x H450 mm.

[Request 3D or DWG files.](#)



[Back to
Index](#)

LOW POUF

Low Pouf is a special shape and materials combo. A classic design complimentary piece, perfect to add value to an interior design project. Bring a touch of sumptuous luxury to any living room, lounge or bedroom.

Pictured Fabrics: Cotton Velvet Siége 0343 Ruby;
Pictured Materials: Beech Wood (eucalyptus color) Base;
Measurements: L470 x W470 x H480 mm.

[Request 3D or DWG files.](#)



[Back to
Index](#)

ANGLES POUF

Angles Pouf is easy to use and versatile. The beauty of interior design projects is in the details and they are the best thing about this piece. It only takes one of this floor pouf or a few to dress up a space. The geometric shape doubles as a seat or footrest.

Pictured Fabrics: Cotton Velvet Paris Deep Blue;
Measurements: L500 x W500 x H450 mm.

[Request 3D or DWG files.](#)







[Back to
Index](#)

KATE POUF

Kate Pouf is a regular lines simple piece that will look perfect as a complimentary item in any living space. It's perfect as an extra seat or as a footstool. A romantic silhouette with unique details for timeless environments.

Pictured Fabrics: Cotton Velvet Paris Mostaza;
Big Measurements: L900 x W900 x H450 mm;
Small Measurements: L480 x W480 x H450 mm.

[Request 3D or DWG files.](#)



[Back to
Index](#)

RACHEL POUFS

Rachel Pouf is an uncomplicated design piece. A combo of materials created to fill up an interior on a key-way. It's great an extra seat or footstool. Rachel Pouf has a contemporary design and is dedicated to relaxing moments.

Pictured Fabrics: Cotton Velvet Siége 1601 Natural Nude;
Pictured Materials: Matte Walnut Wood Base;
Big Measurements: L920 x W920 x H440 mm;

Pictured Fabrics: Cotton Velvet Siége 0893 Stone;
Pictured Materials: Matte Walnut Wood Base;
Small Measurements: L500 x W500 x H450 mm.

[Request 3D or DWG files.](#)







[Back to
Index](#)

RUBI POUF

Rubi Pouf is a complementary piece that provides two important things to an interior design project: comfort and design. With its soft shape and simple lines, this is the pouf to choose when you wish for special spaces.

Pictured Fabrics: Cotton Velvet Paris Deep Blue;
Big Measurements: ø1200 x H400 mm;
Small Measurements: ø700 x H400 mm.

[Request 3D or DWG files.](#)



[Back to
Index](#)

LEIA POUF

Leia Pouf is an eye-catching piece due to its details, materials and handmade couture and upholstery techniques. With its soft design, graceful lines and detailed surface, this is the pouf to choose for sophisticated living rooms.

Pictured Fabrics: Cotton Velvet Paris Mostaza;
Pictured Materials: Black Texturized Steel;
Measurements: L470 x W470 x H450 mm.

[Request 3D or DWG files.](#)



ZIGZAG POUF

The unique shape of Zigzag Pouf gives a more structured look and feel than most other floor poufs. Perfect for projects with unlimited space but also for smaller decors, Zigzag Pouf never goes out of style.

Pictured Fabrics: Cotton Velvet Paris Brick;
Measurements: L500 x W500 x H450 mm.

[Request 3D or DWG files.](#)









[Back to
Index](#)

LIZ POUF

Liz Pouf is a stylish yet simple piece that hides touches of Scandinavian design. It's sophisticated yet romantic silhouette brings a touch of sumptuous luxury to any living room, lounge, salon or bedroom.

Pictured Fabrics: Cotton Velvet Siége 0166 Curry;
Pictured Materials: Black Texturized Steel;
Measurements: L550 x W550 x H550 mm.

[Request 3D or DWG files.](#)

BEDS





[Back to
Index](#)

SLAB BED

Slab Bed can add glamorous elegance to both contemporary and classic bedroom. This velvet bed is extremely comfortable and soft to touch. It also adds texture and warmth.

Pictured Materials: Crevin Gaudi 11 and Montana Chocolate;
Pictured Materials: Black Texturized Steel;
Measurements: L2060 x W2445 x H1320 mm
(180x200 mattress).

[Request 3D or DWG files.](#)





[Back to
Index](#)

BARDOT BED

Bardot Bed is a hymn to a vibrant city's identity. A metropolitan vision of design that officializes a special concept for a high-end master bedroom project. This bed with a velvet headboard offers the ideal mix of sophisticated style and plush comfort.

Pictured Fabrics: Cotton Velvet Project FR 16 Deep Bordeaux;
Pictured Materials: Gold Polished Stainless Steel Detail;
Measurements: L1930 x W2340 x H1500 mm
(180x200 mattress).6

[Request 3D or DWG files.](#)





[Back to
Index](#)

ECHO BED

Echo Bed is the ideal fully upholstered velvet bed frame for sophisticated yet modern bedrooms. This bed sets the tone for the entire master bedroom and makes the space more comfortable.

Pictured Materials: Cotton Velvet Paris Khaki and Royal Suede Caramello;
Measurements: L2060 x W2290 x H1150 mm
(180x200 mattress).

[Request 3D or DWG files.](#)









Back to
Index

MONROE BED

Monroe Bed reinterprets a contemporary vision of a classic design. The handmade couture-technique Deep Buttoning adds opulence to this amazing piece. The Monroe Bed, with a velvet headboard, adds texture to traditional and modern master bedrooms.

Pictured Fabrics: Cotton Velvet Siége 0157 Bronze Mist Green;
Pictured Materials: Gold Polished Stainless Steel Detail;
Big Measurements: L4030 x W2260 x H1240 mm
(180x200 mattress).

[Request 3D or DWG files.](#)





[Back to
Index](#)

YUMI BED

Yumi Bed is personified by a simple design but is also indicated for contemporary residential or hotel projects. This upholstered bed is perfect to create a contemporary plush charm. It has a luxurious softness with a modern touch.

Pictured Fabrics: Cotton Velvet Paris Dark Blue;
Pictured Materials: Matte Fumé Eucalyptus Wood;
Measurements: L2010 x W2190 x H1120 mm
(180x200 mattress).

[Request 3D or DWG files.](#)





Back to
Index

AMANDA BED

Amanda Bed is a fundamental design piece. Full of simple lines and materials, this modern bed will complement your bedroom's project. The headboard is the focal point of this bed, perfect to design cozy spaces.

Pictured Fabrics: Crevin Gaudi 02 and Natural Leather Montana Siena;

Pictured Materials: Stained in Fumé Eucalyptus Wood;
Measurements: L3100 x W2190 x H930 mm
(180x200 mattress).

[Request 3D or DWG files.](#)





CASEGOODS





[Back to
Index](#)

SUNSET FOLDING SCREEN

Sunset Folding Screen owns an avant-garde design. An improbable piece that combines metal and fabric showing its singularity in each detail. This folding screen is a mandatory furniture piece to create space in a bedroom or in other home areas.

Pictured Fabrics: Cotton Velvet Paris Brick, Beige and Elephant;
Pictured Materials: Gold Polished Stainless Steel Structure;
Measurements: L1860 x D50 x H1800 mm.

[Request 3D or DWG files.](#)





[Back to
Index](#)

LAVINIA FOLDING SCREEN

Lavinia Folding Screen shows how special a handmade couture piece can be, sculpting special shapes on unpredictable surfaces. This velvet piece is a gamechanger for any space. As a statement design piece, it is the ultimate finishing touch.

Pictured Fabrics: Cotton Velvet Paris Brick;
Measurements: L1800 x D45 x H1950.

[Request 3D or DWG files.](#)



[Back to
Index](#)

ELBA HANGER

Elba Hanger was inspired by futuristic abstract shapes. A functional piece that also adds elegance to space, from modern living room to masculine bedrooms. It can also be combined with the Elba Armchair and the Elba Ottoman.

Pictured Materials: Nickel Polished Stainless Steel, Beech Wood (matte fumé eucalyptus color) Tips;
Measurements: W390 x D380 x H1670 mm.

[Request 3D or DWG files.](#)



Back to
Index

CLEO MIRROR

Cleo Mirror is a curvy special piece with a small shelf in wood. A fundamental design mirror for an interior design project. Simple without being boring, this mirror is a big solution for contemporary spaces.

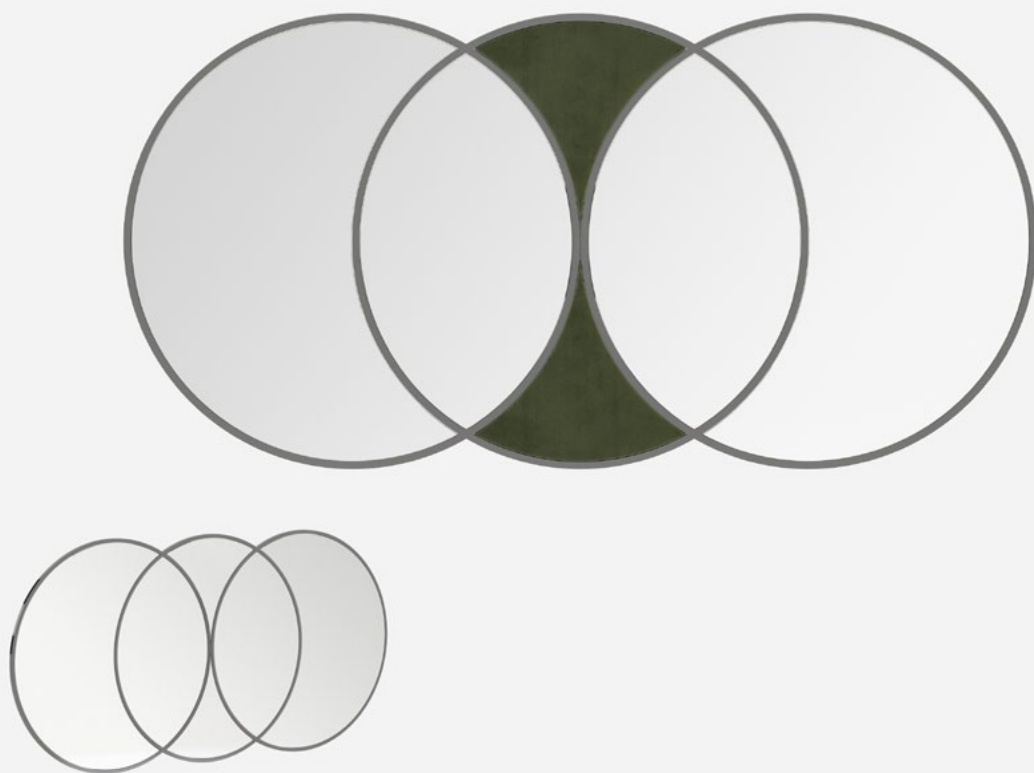
Pictured Fabrics: Natural Leather Montana Siena;
Pictured Materials: Bronze Mirror, Beech Stained in Fumé
Eucalyptus Wood Shelf;
Big Measurements: D620 x W170 x H1920 mm;
Small Measurements: D620 x W170 x H1520 mm.

[Request 3D or DWG files.](#)









[Back to
Index](#)

SIENNA MIRROR

Sienna Mirror is a statement piece that unpredictably combines two different materials: metal and fabrics. A special mirror designed to be the major glance in a room. This piece increases the natural light in spaces and adds a warm touch.

Pictured Fabrics: Cotton Velvet Paris Forest;
Pictured Materials: Stainless Steel Structure, Clear Mirror;
Measurements: L1800 x W30 x H900 mm.

[Request 3D or DWG files.](#)



[Back to
Index](#)

INSIDE SIDE TABLES

Inside Side Tables combine a strong modern vibe with retro simple lines and materials. The clean design of these contemporary creations and the minimalist expression add serenity to every interior.

Pictured Materials: Gold Brushed Stainless Steel Top; Black Texturized Steel;

Tall Measurements: L400 x W400 x H500 mm;

Pictured Materials: Black Texturized Steel Structure and Beige Grey Lacquered Steel;

Low Measurements: L700 x W700 x H350 mm.

[Request 3D or DWG files.](#)



[Back to
Index](#)

INSIDE COFFEE TABLE

Inside Coffee Table combines black texturized steel structure and wood top that composes an elegantly sculpted furniture piece. The contemporary shape and clean aesthetic sit very well in modern interiors.

Pictured Materials: Beech Stained in Fumé Eucalyptus Wood;
Black Texturized Steel;
Big Measurements: L1050 x W600 x H350 mm.

[Request 3D or DWG files.](#)







[Back to
Index](#)

REESE SIDE TABLE

Reese Side Table is proof of how a combination of wood veneer and metal can make a charm design piece. This side table is perfect to create a cool focal point, combining minimalist aesthetics with timeless materials.

Pictured Materials: Matte Smoked Finish Eucalyptus Wood Top and Gold Polished Stainless Steel;
Measurements: L500 x W400 x H450 mm.

[Request 3D or DWG files.](#)



[Back to
Index](#)

MANO COFFEE TABLE & SIDE TABLE

Mano makes a huge impact without shouting in bright colours. These tables are especially effective in minimalist interior design projects. Only for cozy warm living rooms, Mano Coffee Table and Side Table make a shapely statement with its curved design.

Pictured Fabrics: Cotton Velvet Paris Antrachite;
Pictured Materials: Beech Stained in Fumé Eucalyptus Wood ;
Coffee Table Measurements: L800 x W800 x H310 mm;
Pictured Fabrics: Natural Leather Montana Terra;
Pictured Materials: Black Ash Matte;
Side Table Measurements: L400 x W400 x H560 mm.

[Request 3D or DWG files.](#)









[Back to
Index](#)

SHARON SIDE TABLE

Sharon Side Table is a statement piece that in an unpredictable way, combines two different materials: metal and clear glass. The perfect accessory for an interior project with a touch of sophistication and elegance.

Pictured Materials: Polished Stainless Steel Structure and Clear Mirror Top;

Measurements: L550 x W550 x H580 mm.

[Request 3D or DWG files.](#)



[Back to
Index](#)

GINA SIDE TABLES

Gina Side Table is a sumptuous complimentary piece. The perfect casegood's choice for a special living room project. A unique side table that brings glamour and authenticity to every home decor. Complement the look with Gina Coffee Table.

Pictured Materials: Copper Polished Stainless Steel Structure and Clear Glass Top;
Medium Side Table Measurements: L700 x W700 x H500 mm;
Small Side Table Measurements: L500 x W500 x H500 mm.

[Request 3D or DWG files.](#)



[Back to
Index](#)

GINA COFFEE TABLE

Gina Coffee Table is a sumptuous design. A good option for a living area's project. A unique center table that, because of its strong style, brings glamour and authenticity to every home decor.

Pictured Materials: Copper Polished Stainless Steel Structure and Clear Glass Top;

Coffee Table Measurements: L1000 x W1000 x H400 mm.

[Request 3D or DWG files.](#)







[Back to
Index](#)

PANTON SIDE TABLE

Panton Side Table harmoniously brings together two materials in a contemporary way: black steel and clear glass. This piece offers elegance and charm to any modern living room. A timeless piece for special spaces.

Pictured Materials: Fumé Eucalyptus Wood, Black Texturized Steel and Tinted Glass;

Side Table Measurements: L500 x W500 x H510 mm.

[Request 3D or DWG files.](#)



[Back to
Index](#)

PANTON COFFEE TABLE

Panton Coffee Table distinguishes itself with the charming base that supports a clear glass top. This mix of materials creates a unique set of textured tables. Bring a certain glamour into the design arrangement with this table set.

Pictured Materials: Fumé Eucalyptus Wood, Black Texturized Steel and Tinted Glass;

Coffee Table Measurements: L1100 x W1100 x H350 mm.

[Request 3D or DWG files.](#)









[Back to
Index](#)

GRAZI NIGHTSTAND

Grazi Nightstand is a complimentary piece perfect to be part of a room set. This nightstand with gold details will never go out of style. Great for bedrooms of all styles, the Grazi nightstand offer functionality and design.

Pictured Materials: Copper Polished Stainless Steel, Fumé Eucalyptus Wood;
Measurements: L600 x W500 x H530 mm | 1 drawer.

[Request 3D or DWG files.](#)



[Back to
Index](#)

TAYLOR NIGHTSTAND

Taylor Nightstand has a clean design and smooth lines, perfect for contemporary bedrooms. Practical and minimal, this piece fits well in any bedroom interior. Complement the decor with Taylor Console.

Pictured Fabrics: Cotton Velvet Paris Cuoio;
Pictured Materials: Oak Wood;
Measurements: L610 x W500 x H500 mm | 2 drawers.

[Request 3D or DWG files.](#)



[Back to
Index](#)

TAYLOR CONSOLE & DRESSER

Taylor Console is a special complementary wood upholstered piece. The best solution for a master bedroom set. Complement your bedroom decor with Taylor Dresser. Also available with 3 drawers.

Pictured Fabrics: Cotton Velvet Paris Cuoio;
Pictured Materials: Oak Wood;
Console Measurements: L1500 x W500 x H850 mm
| 6 drawers;
Dresser Measurements: L610 x W600 x H1200 mm
| 5 drawers.

[Request 3D or DWG files.](#)





FINISHES & MATERIALS

VELVETS CAT.1



PARIS CREAM

Martindale 100.000;
Composition 100% PL.



PARIS LIGHT GREY

Martindale 100.000;
Composition 100% PL.



PARIS LIGHT BLUE

Martindale 100.000;
Composition 100% PL.



PARIS SAFIRA

Martindale 100.000;
Composition 100% PL.



PARIS STEEL

Martindale 100.000;
Composition 100% PL.



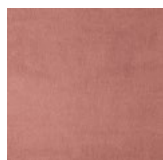
PARIS ANTHRACITE

Martindale 100.000;
Composition 100% PL.



PARIS PINK

Martindale 100.000;
Composition 100% PL.



PARIS SALMON

Martindale 100.000;
Composition 100% PL.



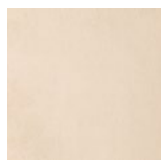
PARIS DEEP RED

Martindale 100.000;
Composition 100% PL.



PARIS RED ROSE

Martindale 100.000;
Composition 100% PL.



PARIS BEIJE

Martindale 100.000;
Composition 100% PL.



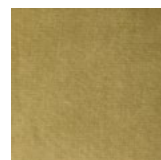
PAIS CHAMPAGNE

Martindale 100.000;
Composition 100% PL.



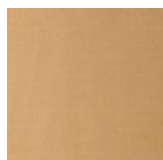
PARIS MOSTAZA

Martindale 100.000;
Composition 100% PL.



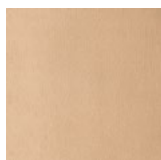
PARIS MUD

Martindale 100.000;
Composition 100% PL.



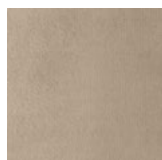
PARIS CAMEL

Martindale 100.000;
Composition 100% PL.



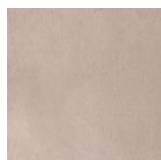
PARIS LION

Martindale 100.000;
Composition 100% PL.



PARIS ELEPHANT

Martindale 100.000;
Composition 100% PL.



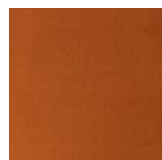
PARIS KHAKE

Martindale 100.000;
Composition 100% PL.



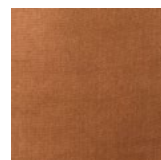
PARIS MOUSE

Martindale 100.000;
Composition 100% PL.



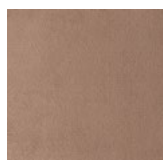
PARIS BRICK

Martindale 100.000;
Composition 100% PL.



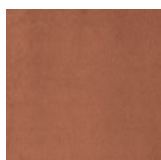
PARIS TEJA

Martindale 100.000;
Composition 100% PL.



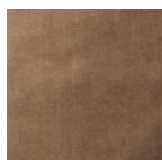
PARIS CHOCOLATE

Martindale 100.000;
Composition 100% PL.



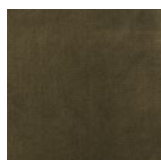
PARIS CUOIO

Martindale 100.000;
Composition 100% PL.



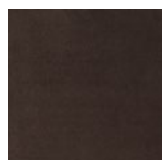
PARIS TAUPE

Martindale 100.000;
Composition 100% PL.



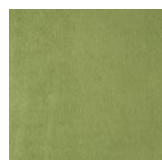
PARIS FOREST

Martindale 100.000;
Composition 100% PL.



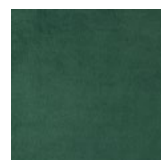
PARIS EBONY

Martindale 100.000;
Composition 100% PL.



PARIS LIMA

Martindale 100.000;
Composition 100% PL.



PARIS GREEN

Martindale 100.000;
Composition 100% PL.



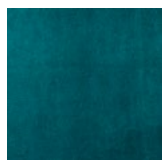
PARIS TURQUOISE

Martindale 100.000;
Composition 100% PL.



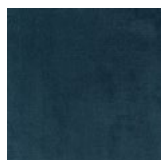
PARIS OCEAN

Martindale 100.000;
Composition 100% PL.



PARIS PETROL

Martindale 100.000;
Composition 100% PL.



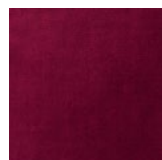
PARIS DARK BLUE

Martindale 100.000;
Composition 100% PL.



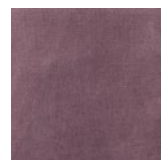
PARIS VIOLET

Martindale 100.000;
Composition 100% PL.



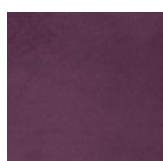
PARIS WINE

Martindale 100.000;
Composition 100% PL.



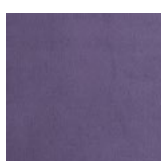
PARIS LAVANDA

Martindale 100.000;
Composition 100% PL.



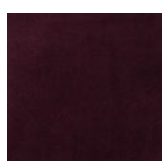
PARIS PURPLE

Martindale 100.000;
Composition 100% PL.



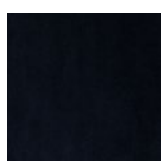
PARIS LILAC

Martindale 100.000;
Composition 100% PL.



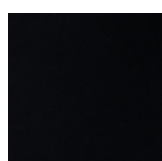
PARIS BORDEUX

Martindale 100.000;
Composition 100% PL.



PARIS DEEP BLUE

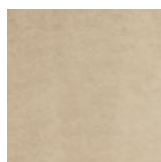
Martindale 100.000;
Composition 100% PL.



PARIS BLACK

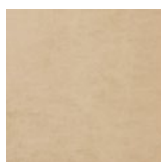
Martindale 100.000;
Composition 100% PL.

VELVETS CAT.2



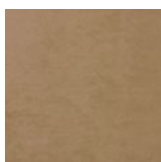
PROJECT IVORY

Martindale 100.000;
Composition 100%
PL.



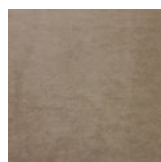
PROJECT SAND

Martindale 100.000;
Composition 100%
PL



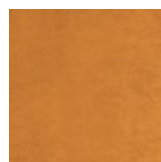
PROJECT BEIGE

Martindale 100.000;
Composition 100%
PL



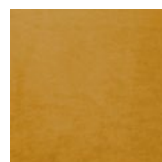
PROJECT TAUPE

Martindale 100.000;
Composition 100%
PL



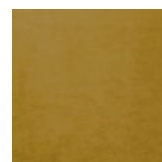
PROJECT CURRY

Martindale 100.000;
Composition 100%
PL



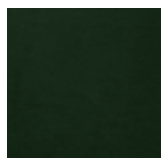
PROJECT PURE YELLOW

Martindale 100.000;
Composition 100%
PL



PROJECT GOLDEN OLIVE

Martindale 100.000;
Composition 100%
PL



PROJECT DARK GREEN

Martindale 100.000;
Composition 100%
PL



PROJECT STORM BLUE

Martindale 100.000;
Composition 100%
PL



PROJECT LAQUAMARINE

Martindale 100.000;
Composition 100%
PL



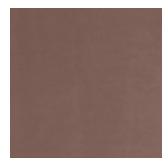
PROJECT CAPRI BLUE

Martindale 100.000;
Composition 100%
PL



PROJECT LIGHT GRAY

Martindale 100.000;
Composition 100%
PL



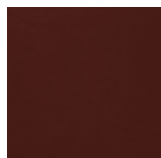
PROJECT LAVANDER

Martindale 100.000;
Composition 100%
PL



PROJECT ASH ROSE

Martindale 100.000;
Composition 100%
PL



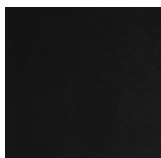
PROJECT DEEP BORDEAUX

Martindale 100.000;
Composition 100%
PL



PROJECT RUBI

Martindale 100.000;
Composition 100%
PL



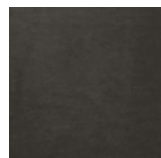
PROJECT BLACK

Martindale 100.000;
Composition 100%
PL



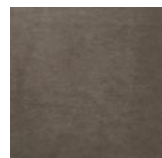
PROJECT HORIZON BLUE

Martindale 100.000;
Composition 100%
PL



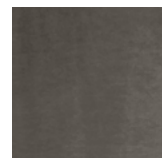
PROJECT STEEL GRAY

Martindale 100.000;
Composition 100%
PL



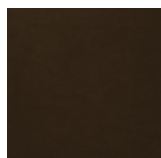
PROJECT DARK TAUPE

Martindale 100.000;
Composition 100%
PL



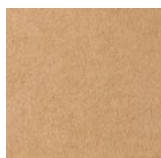
PROJECT ASH GRAY

Martindale 100.000;
Composition 100%
PL

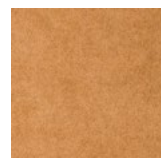


PROJECT CHOCOLATE

Martindale 100.000;
Composition 100%
PL



ROYAL SUEDE CAMEL



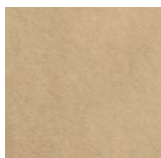
ROYAL SUEDE CARMELLO

VELVETS CAT.3



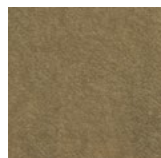
SIEGE 0001

Martindale 40.000;
Composition 100%
CO.



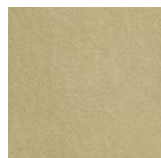
SIEGE 0071

Martindale 40.000;
Composition 100%
CO.



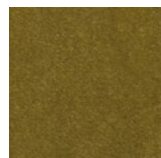
SIEGE 0074

Martindale 40.000;
Composition 100%
CO.



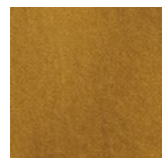
SIEGE 0076

Martindale 40.000;
Composition 100%
CO.



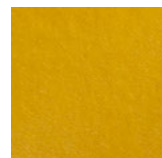
SIEGE 0157

Martindale 40.000;
Composition 100%
CO.



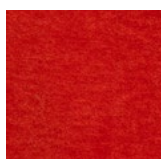
SIEGE 0166

Martindale 40.000;
Composition 100%
CO.



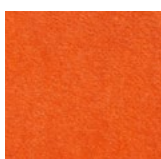
SIEGE 0176

Martindale 40.000;
Composition 100%
CO.



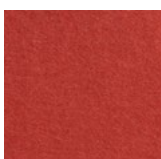
SIEGE 0256

Martindale 40.000;
Composition 100%
CO.



SIEGE 0278

Martindale 40.000;
Composition 100%
CO.



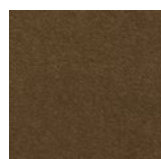
SIEGE 0342

Martindale 40.000;
Composition 100%
CO.



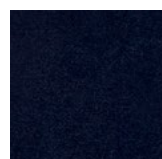
SIEGE 0343

Martindale 40.000;
Composition 100%
CO.



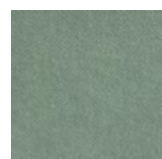
SIEGE 0452

Martindale 40.000;
Composition 100%
CO.



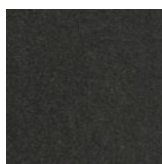
SIEGE 0642

Martindale 40.000;
Composition 100%
CO.

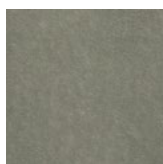


SIEGE 0865

Martindale 40.000;
Composition 100%
CO.



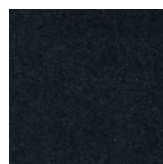
SIEGE 0881
Martindale 40.000;
Composition 100%
CO.



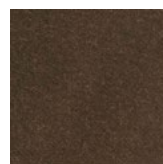
SIEGE 0886
Martindale 40.000;
Composition 100%
CO.



SIEGE 0893
Martindale 40.000;
Composition 100%
CO.



SIEGE 0894
Martindale 40.000;
Composition 100%
CO.



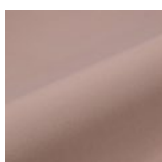
SIEGE 0895
Martindale 40.000;
Composition 100%
CO.



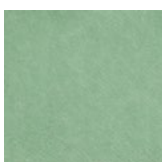
SIEGE 0968
Martindale 40.000;
Composition 100%
CO.



SIEGE 1102
Martindale 40.000;
Composition 100%
CO.



SIEGE 1601
Martindale 40.000;
Composition 100%
CO.



SIEGE 7046
Martindale 40.000;
Composition 100%
CO.

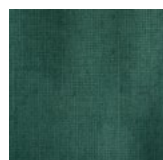
TEXTURIZED VELVETS CAT.2



BOX FR 3
Martindale 45.000;
Composition 100%
PES FR.



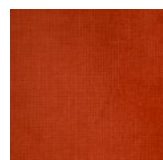
BOX FR 10
Martindale 45.000;
Composition 100%
PES FR.



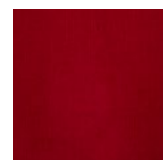
BOX FR 12
Martindale 45.000;
Composition 100%
PES FR.



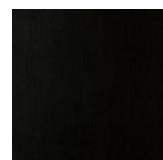
BOX FR 13
Martindale 45.000;
Composition 100%
PES FR.



BOX FR 15
Martindale 45.000;
Composition 100%
PES FR.

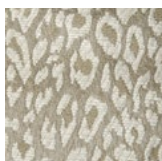


BOX FR 16
Martindale 45.000;
Composition 100%
PES FR.



BOX FR 17
Martindale 45.000;
Composition 100%
PES FR.

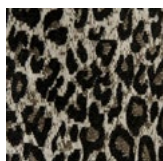
PATTERNED VELVETS CAT.3



LEOPARD 1
Martindale 50.000;
Composition 45%
CO + 31%VI +
24%PL.

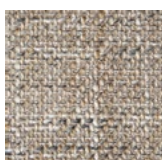


LEOPARD 8
Martindale 50.000;
Composition 45%
CO + 31%VI +
24%PL.



LEOPARD 9
Martindale 50.000;
Composition 45%
CO + 31%VI +
24%PL.

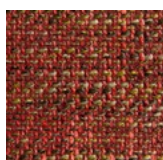
LINEN COTTONS CAT.2



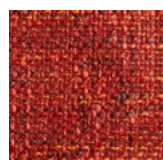
BETREND 2
Martindale 50.000;
Composition 53.3%
AC + 46.7%PES.



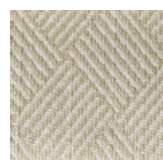
BETREND 7
Martindale 50.000;
Composition 53.3%
AC + 46.7%PES.



BETREND 14
Martindale 50.000;
Composition 53.3%
AC + 46.7%PES.



BETREND 15
Martindale 50.000;
Composition 53.3%
AC + 46.7%PES.



CRISS CROSS 1
Martindale 50.000;
Composition 38%
VI + 33%CO +
21%PL + 8%LI.



CRISS CROSS 3
Martindale 50.000;
Composition 38%
VI + 33%CO +
21%PL + 8%LI.



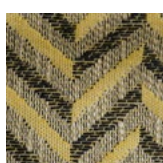
CRISS CROSS 4
Martindale 50.000;
Composition 38% VI
+ 33%CO + 21%PL
+ 8%LI.



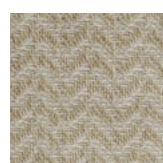
CRISS CROSS 6
Martindale 50.000;
Composition 38%
VI + 33%CO +
21%PL + 8%LI.



TWINCKLE 4
Martindale 50.000;
Composition 56%
CO + 20%PL +
16%VI + 8%LI.



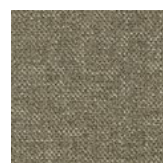
TWINCKLE 6
Martindale 50.000;
Composition 56%
CO + 20%PL +
16%VI + 8%LI.



WAVES 1
Martindale 50.000;
Composition 49%
CO + 25%PL +
18%VI + 9%LI.



**CREVIN
GAUDI 02**



**CREVIN
GAUDI 10**



**CREVIN
GAUDI 11**

LINEN COTTONS CAT.2



TRENDY 02

Martindale 100.000;
Composition
58.20% AC +
35.30% PES + 3.90%
PES + 2.60% VI



TRENDY 06

Martindale 100.000;
Composition
58.20% AC +
35.30% PES + 3.90%
PES + 2.60% VI



TRENDY 10

Martindale 100.000;
Composition
58.20% AC +
35.30% PES + 3.90%
PES + 2.60% VI



TRENDY 11

Martindale 100.000;
Composition
58.20% AC +
35.30% PES + 3.90%
PES + 2.60% VI



TRENDY 17

Martindale 100.000;
Composition
58.20% AC +
35.30% PES + 3.90%
PES + 2.60% VI



TRENDY 19

Martindale 100.000;
Composition
58.20% AC +
35.30% PES + 3.90%
PES + 2.60% VI



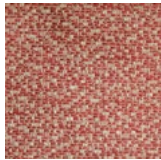
TRENDY 25

Martindale 100.000;
Composition
58.20% AC +
35.30% PES + 3.90%
PES + 2.60% VI



PARTNER 3

Martindale 50.000;
Composition
54%CO + 21%PL
+17% VI + 8%LI



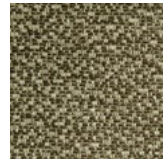
PARTNER 4

Martindale 50.000;
Composition
54%CO + 21%PL
+17% VI + 8%LI



CANVAS 8

Martindale 200.000;
Composition
100%PL.



PARTNER 6

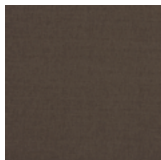
Martindale 50.000;
Composition
54%CO + 21%PL
+17% VI + 8%LI



CANVAS 2

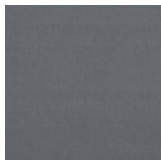
Martindale 200.000;
Composition
100%PL.

LINEN COTTONS CAT.2



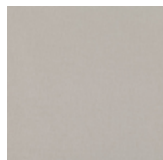
KIRBY K5044-11

Martindale 65.000;
Composition
100%CO.



KIRBY K5044-68

Martindale 65.000;
Composition
100%CO.



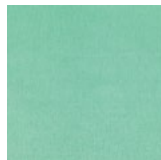
K5044-95 SAHARA FOSSIL

Martindale 65.000;
Composition
100%CO.



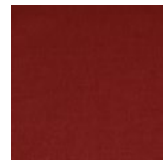
KIRBY K5044-90

Martindale 65.000;
Composition
100%CO.



KIRBY K5044-102

Martindale 65.000;
Composition
100%CO.



KIRBY K5044-106

Martindale 65.000;
Composition
100%CO.



KIRBY K5044-123

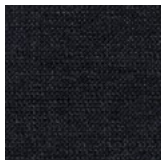
Martindale 65.000;
Composition
100%CO.

LINEN COTTONS CAT.3



CREVIN BLEND 7

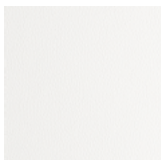
Composition
100%LI



CREVIN BLEND 47

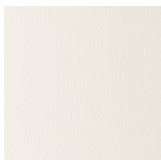
Composition
100%LI

SYNTHETIC LEATHERS CAT.1



OMEGA WHITE

Martindale 250.000
Composition
100%POL



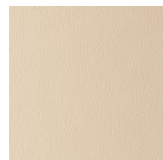
OMEGA CREAM

Martindale 250.000
Composition
100%POL



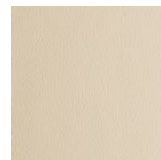
OMEGA ICE

Martindale 250.000
Composition
100%POL



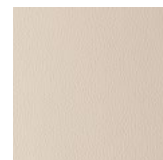
OMEGA BEIGE

Martindale 250.000
Composition
100%POL



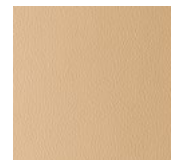
OMEGA IVORY

Martindale 250.000
Composition
100%POL



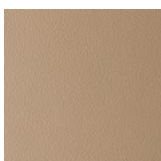
OMEGA TOFFEE

Martindale 250.000
Composition
100%POL



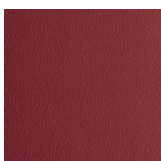
OMEGA CAMEL

Martindale 250.000
Composition
100%POL



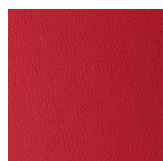
OMEGA TRUFA

Martindale 250.000
Composition
100%POL



OMEGA BORDEAUX

Martindale 250.000
Composition
100%POL



OMEGA RED

Martindale 250.000
Composition
100%POL



OMEGA ORANJE

Martindale 250.000
Composition
100%POL



OMEGA MOSTAZA

Martindale 250.000
Composition
100%POL



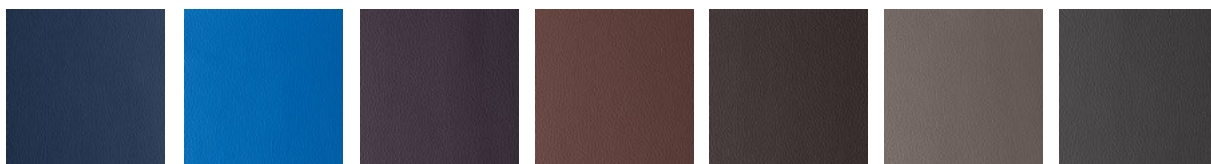
OMEGA FOREST

Martindale 250.000
Composition
100%POL



OMEGA LIMA

Martindale 250.000
Composition
100%POL



OMEGA

BLUE

Martindale 250.000
Composition
100%POL

OMEGA

SKY

Martindale 250.000
Composition
100%POL

OMEGA

PURPLE

Martindale 250.000
Composition
100%POL

OMEGA

LIGHT BROWN

Martindale 250.000
Composition
100%POL

OMEGA

DARK BROWN

Martindale 250.000
Composition
100%POL

OMEGA

GRAY

Martindale 250.000
Composition
100%POL

OMEGA

OLIVE GREY

Martindale 250.000
Composition
100%POL



OMEGA CEMENT

Martindale 250.000
Composition
100%POL

OMEGA ASH

Martindale 250.000
Composition
100%POL

OMEGA BLACK

Martindale 250.000
Composition
100%POL

NATURAL LEATHERS CAT.3



MONTANA
MILK

MONTANA
OPTIC WHITE

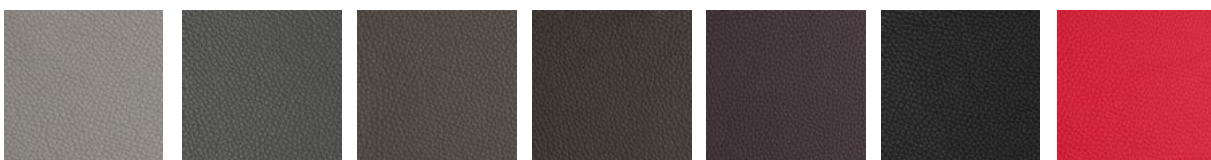
MONTANA
CREAM

MONTANA
SAND

MONTANA
SILVER

MONTANA
CIMENT

MONTANA
PETROL



MONTANA
ASH

MONTANA
ANTHRACITE

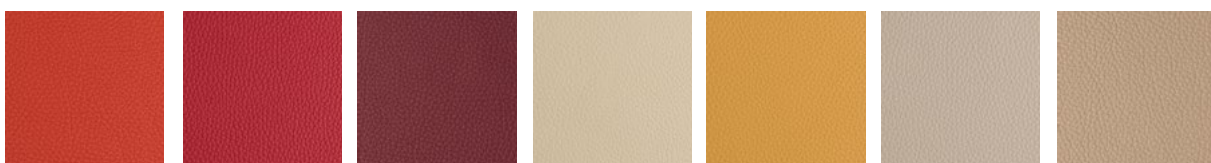
MONTANA
MOUSE

MONTANA
EBONY

MONTANA
PURPLE

MONTANA
BLACK

MONTANA
LOLLIPOP



MONTANA
MASAI

MONTANA
RED

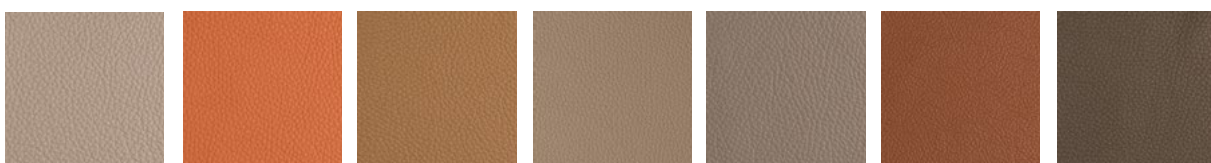
MONTANA
BORDEAUX

MONTANA
BEIGE

MONTANA
MOSTAZA

MONTANA
TOFFEE

MONTANA
ALMOND



MONTANA
TAUPE

MONTANA
BRICK

MONTANA
TERRA

MONTANA
TRUFFA

MONTANA
ELEPHANT

MONTANA
CAMEL

MONTANA
SIENA



MONTANA
CHOCOLATE

MONTANA
AVOCAT

MONTANA
FOREST

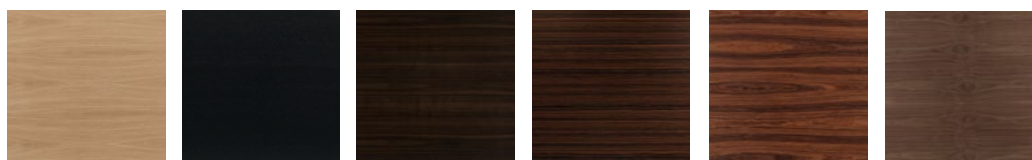
MONTANA
ESPRIT

MONTANA
OCTANE

MONTANA
OCEAN

MONTANA
TOBACCO

WOOD VENEERS MATTE



NATURAL OAK

BLACK OAK

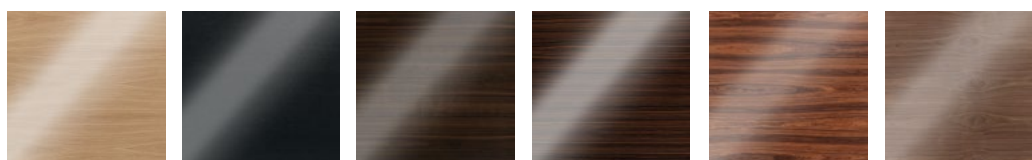
EUCALYPTUS

EBONY

IRON WOOD

WALNUT

WOOD VENEERS HIGH GLOSS



NATURAL OAK

BLACK OAK

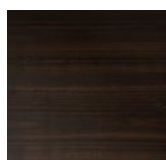
EUCALYPTUS

EBONY

IRON WOOD

WALNUT

WOOD VENEERS MATE



MATTE SMOKED
EUCALYPTUS

NOT POLISHED METALS



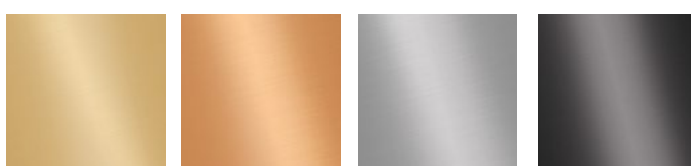
GOLD

COPPER

SILVER

NICKEL

POLISHED METALS



GOLD

COPPER

SILVER

NICKEL

UPHOLSTERY NAILS

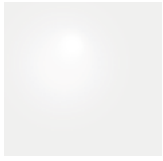


GOLD

PATINA

SILVER

LACQUERERS HIGH GLOSS



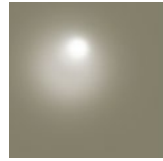
WHITE



GREY



BLACK



GREY BEIGE

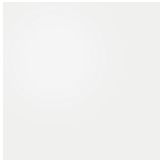


BEIGE



MOKA

LACQUERERS MATTE



WHITE



GREY



BLACK



GREY BEIGE

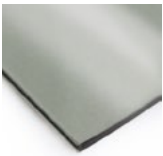


BEIGE

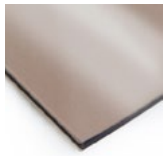


MOKA

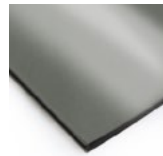
MIRROR



CLEAR

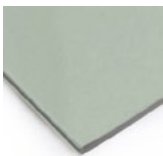


BRONZE



GREY

GLASS



CLEAR GLASS

DOMKAPA HEAD OFFICE

Domkapa, Lda
Rua do Fojo Velho, nº 321
Apartado 35
4585-425 Rebordosa,
Porto, Portugal

T.: (+351) 224 151 297
M.: (+351) 934 086 257



(+351) 937 615 366



info@domkapa.pt



@domkapa



@domkapa



@domkapa



@domkapa

www.domkapa.com